

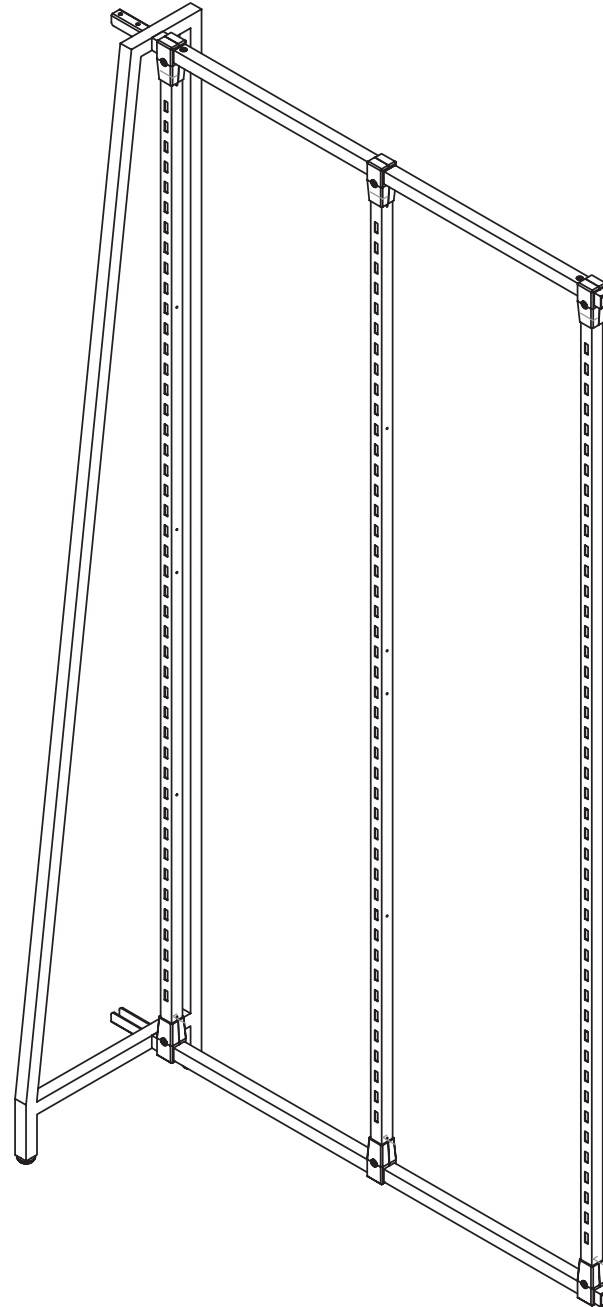
BURNSIDE

ASSEMBLY INSTRUCTIONS

W-FRAME ADD-ON

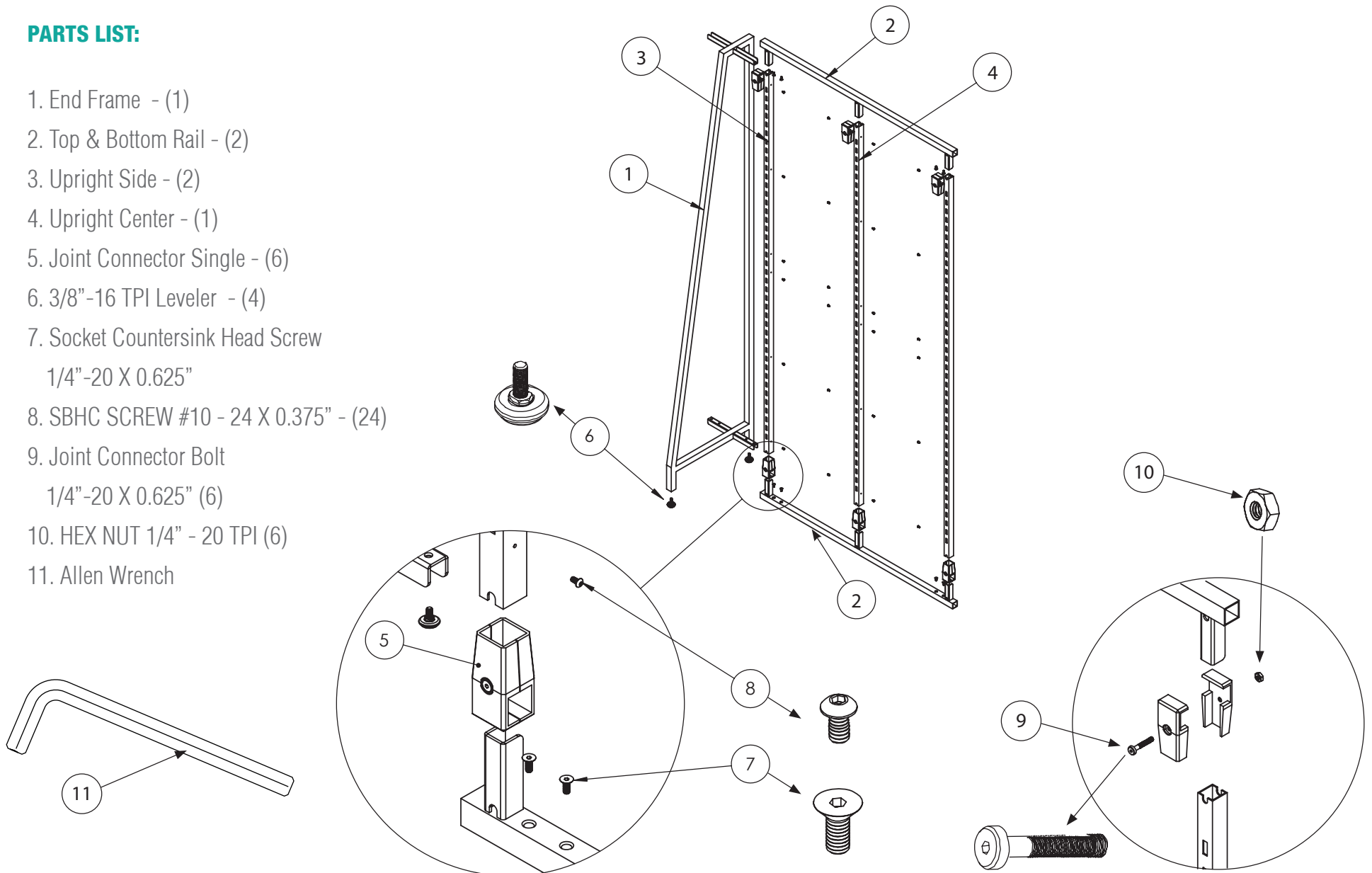
// 292-WF-ADD

Use to add-on to the W-Frame Starter wall system.



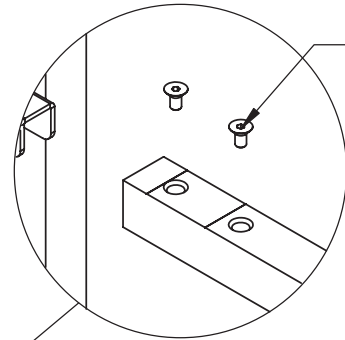
PARTS LIST:

1. End Frame - (1)
2. Top & Bottom Rail - (2)
3. Upright Side - (2)
4. Upright Center - (1)
5. Joint Connector Single - (6)
6. 3/8"-16 TPI Leveler - (4)
7. Socket Countersink Head Screw
1/4"-20 X 0.625"
8. SBHC SCREW #10 - 24 X 0.375" - (24)
9. Joint Connector Bolt
1/4"-20 X 0.625" (6)
10. HEX NUT 1/4" - 20 TPI (6)
11. Allen Wrench



STEP ONE:

Attach Upright Sides to Top & Bottom Rails using the Countersink Head Screws & Allen wrench.

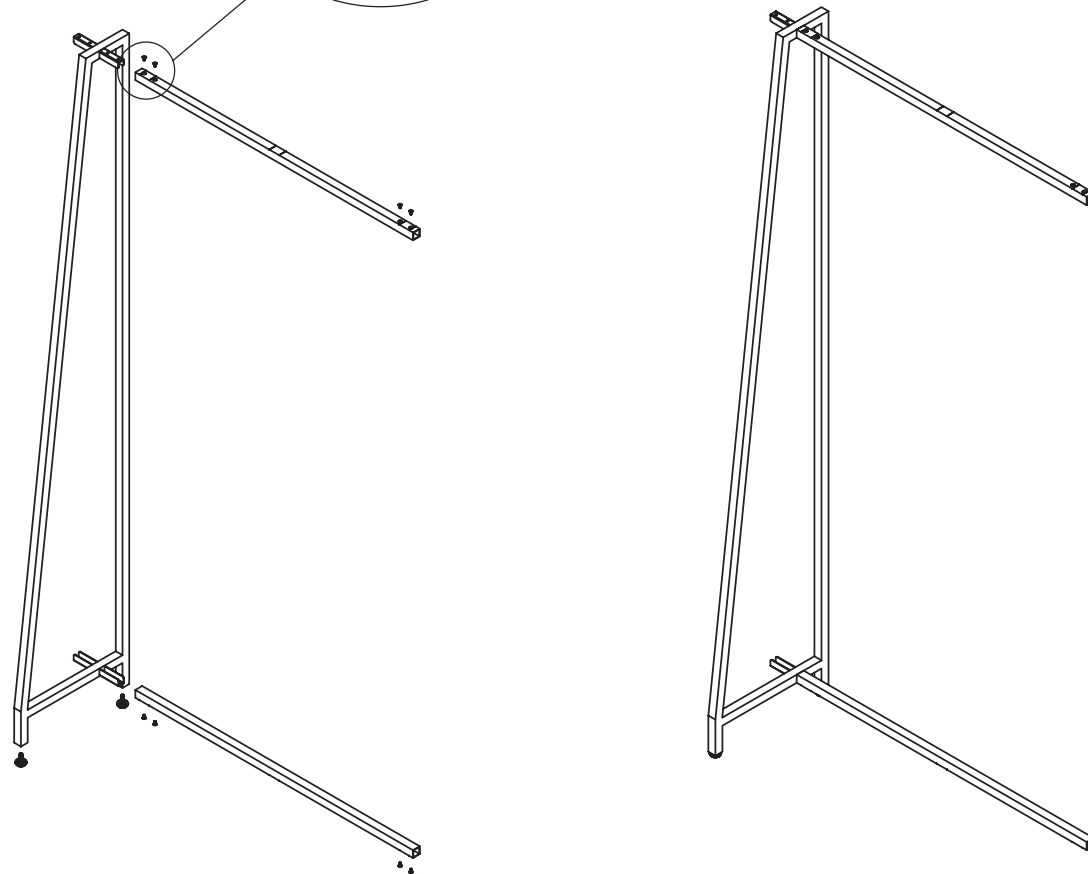


COUNTERSINK HEAD SCREW
1/4" - 20 X 0.625"

STEP TWO:

Attach Levelers.

FIXTURE IS COMPLETE



STEP THREE:

Attach the Upright Sides & Upright Center with the Joint Connectors using the Joint Connector Bolts & Hex Nuts with Allen Wrench.

FIXTURE IS COMPLETE

NOTE: The Upright Center will have holes on either side while the Upright Sides will only have holes on the inside of the frame.

ALIGN CONNECTORS OVER THE SCORED LINES ON TOP & BOTTOM

JOINT CONNECTOR BOLT
1/4" - 20 X 1.625

HEX NUT 1/4" TPI

