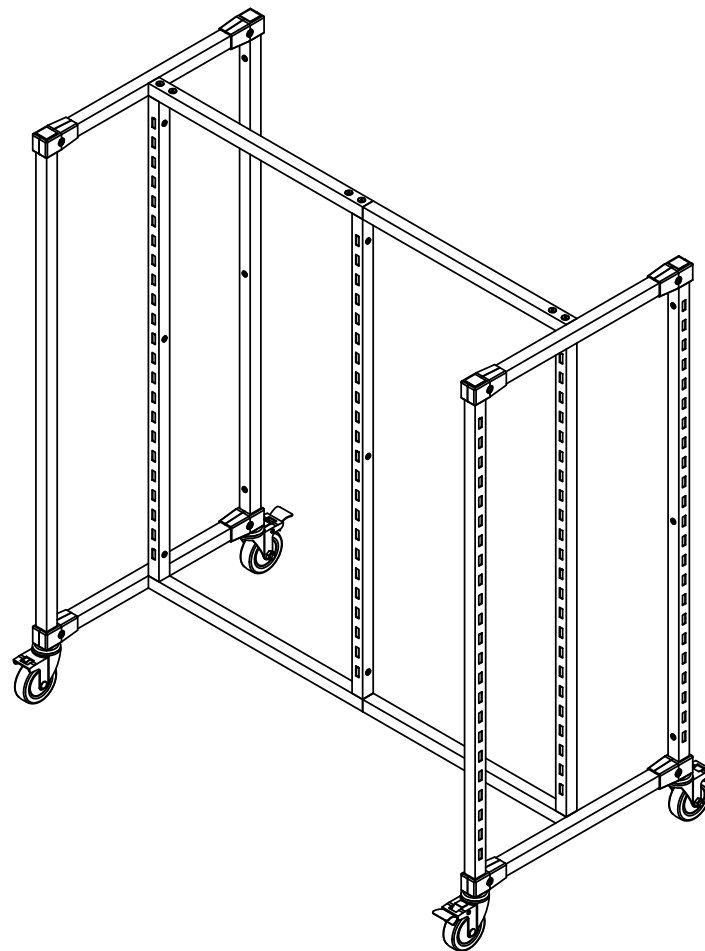




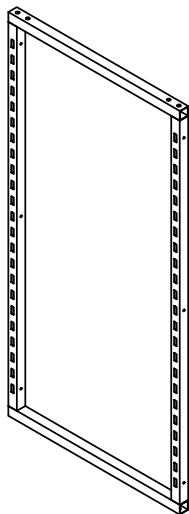
**BURNSIDE**

ASSEMBLY INSTRUCTIONS

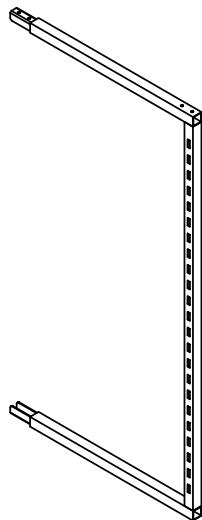
## 48IN GONDOLA FIXTURE :: 292/299 - GOND48



### PART LIST:



1X. CENTER FRAME



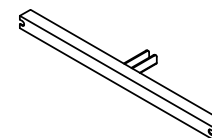
1X. ADDON FRAME



2X. UPRIGHT - LEFT



2X. UPRIGHT - RIGHT



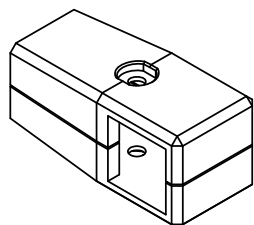
4X. CROSS RAIL



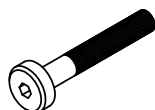
2X. STEM CASTER  
( 4" DIA. WHEEL W/ BRAKE )



2X. STEM CASTER  
( 4" DIA. WHEEL NON- BRAKE )



8X. SET CONNECTOR



8X. JOINT CONNECTOR  
BOLT 1/4"-20 X 1 5/8"



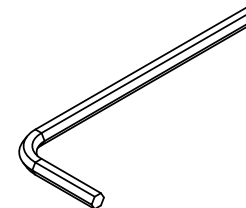
8X. HEX NUT  
1/4"-20UNC



12X. ALLEN HEAD BOLT  
1/4"-20 X 0.75"



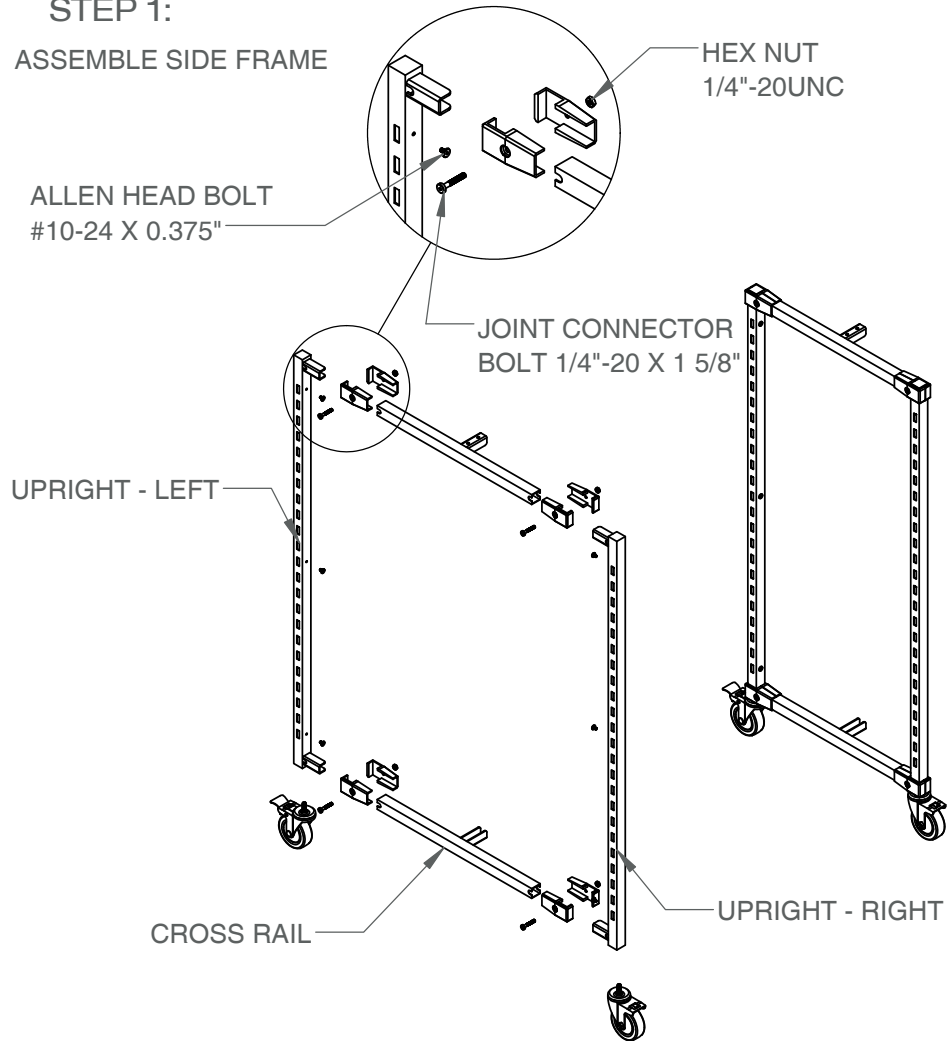
27X. ALLEN HEAD BOLT  
1/4"-20 X 0.75"



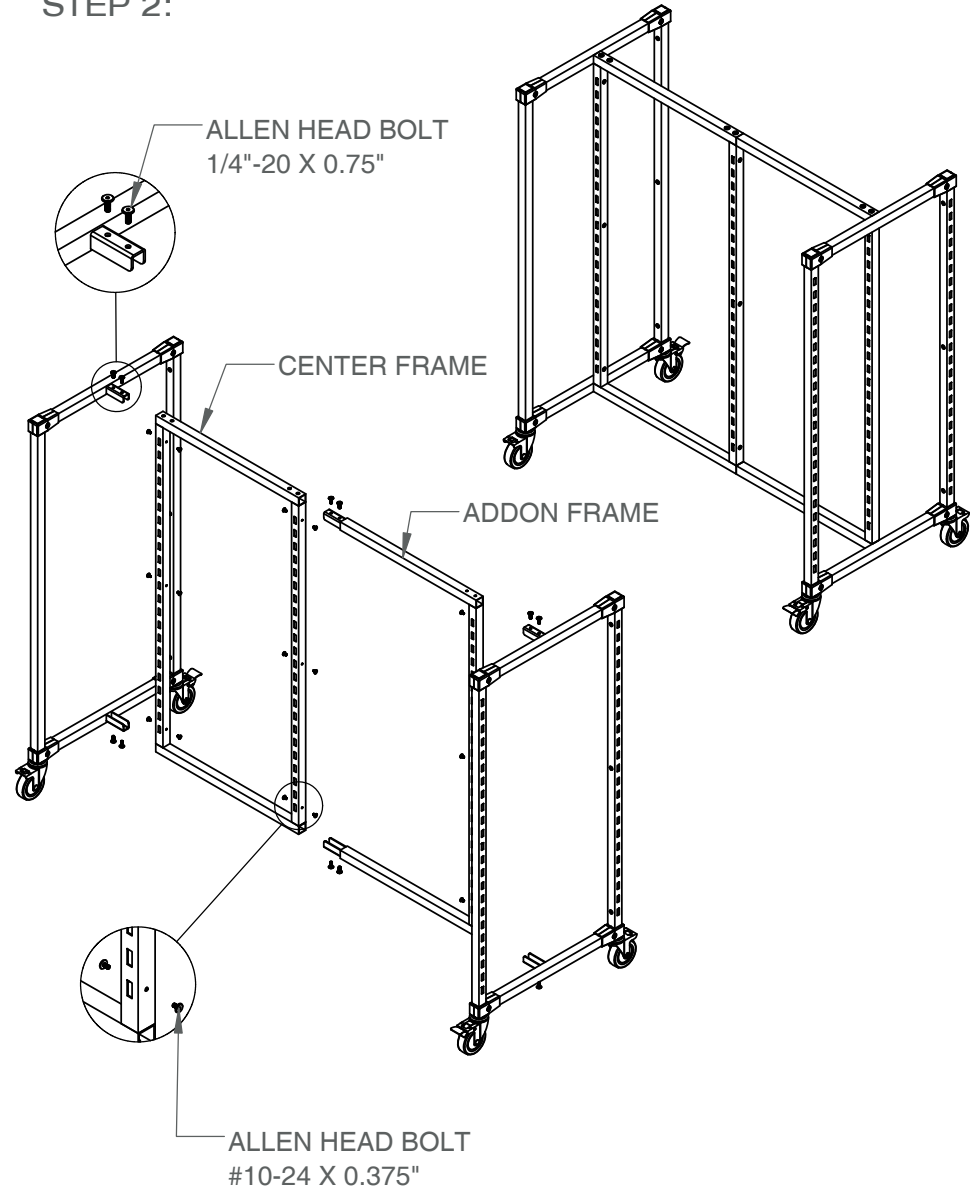
1X. L-EKY FOR 1/4"  
1X. L-KEY FOR #10

### STEP 1:

#### ASSEMBLE SIDE FRAME



### STEP 2:



## STEP 1: ATTACH THE BRACKETS

Using an Allen wrench, securely screw in each of the four brackets to the inside of the fixture frame. Leave slightly loose for extra wiggle room (these can be tightened later).

## STEP 2: REMOVE HEAD

Remove the head/thumb screw from each bracket. This will allow you to mount the back panel.

## STEP 3: ALIGN THE HOLES

Align the corresponding holes on the back panel with each of the mounting brackets on the fixture. Take care to properly line them up.

## STEP 4: SECURE THE BACK PANEL

Place a silicon washer on each side of the back panel, and then use the head/thumb screw to fasten the back panel in place. Ensure the back panel is securely attached.

