

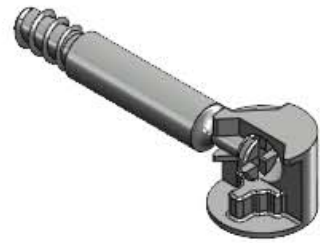
ASSEMBLY INSTRUCTIONS - 260 - EC - OCD - (OPEN CORNER UNIT)



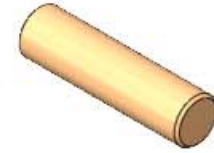
PHILLIPS FLAT HEAD SELF-TAPPING SCREW #8 X 1.5" (X15)



SHELF CLIP (X8)



CAMLOCK (X3)



WOOD DOWEL (X8)



A. LEFT SIDE PANEL (X1)



B. RIGHT SIDE PANEL (X1)



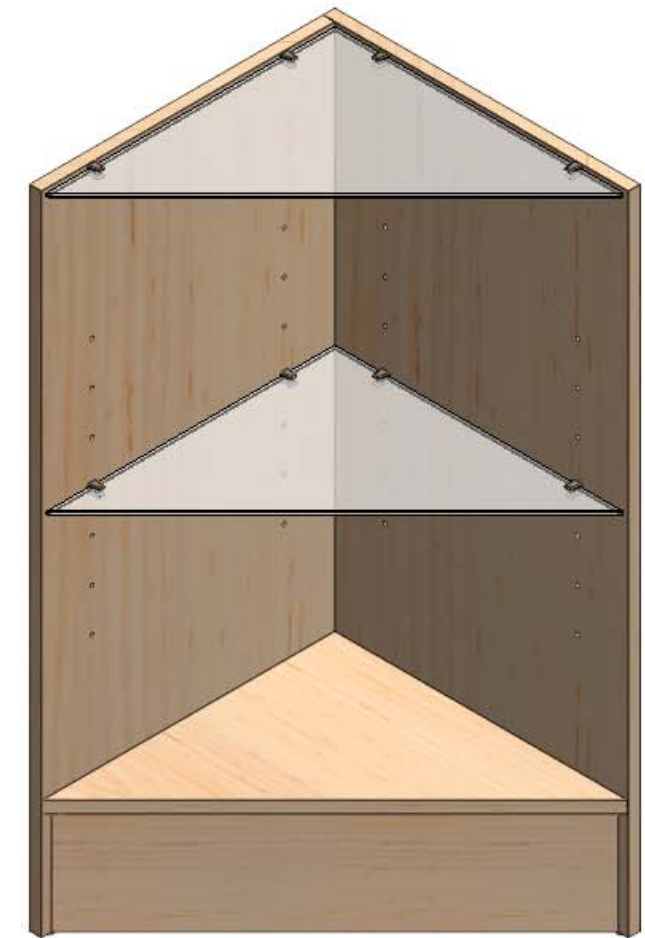
C. BOTTOM PANEL (X1)



D. TOE KICK (X1)



E. GLASS SHELF (X2)

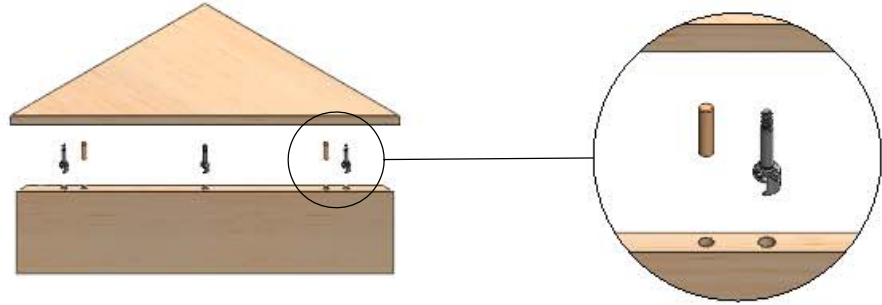


ASSEMBLY INSTRUCTIONS - 260 - EC - OCD - (OPEN CORNER UNIT)

STEP 1:

1. SCREW THE BOLTS OF CAMLOCK & INSERT WOOD DOWELS IN THE BOTTOM OF BOTTOM PANEL;
2. CONNECT THE TOE KICK BY CAMLOCKS;

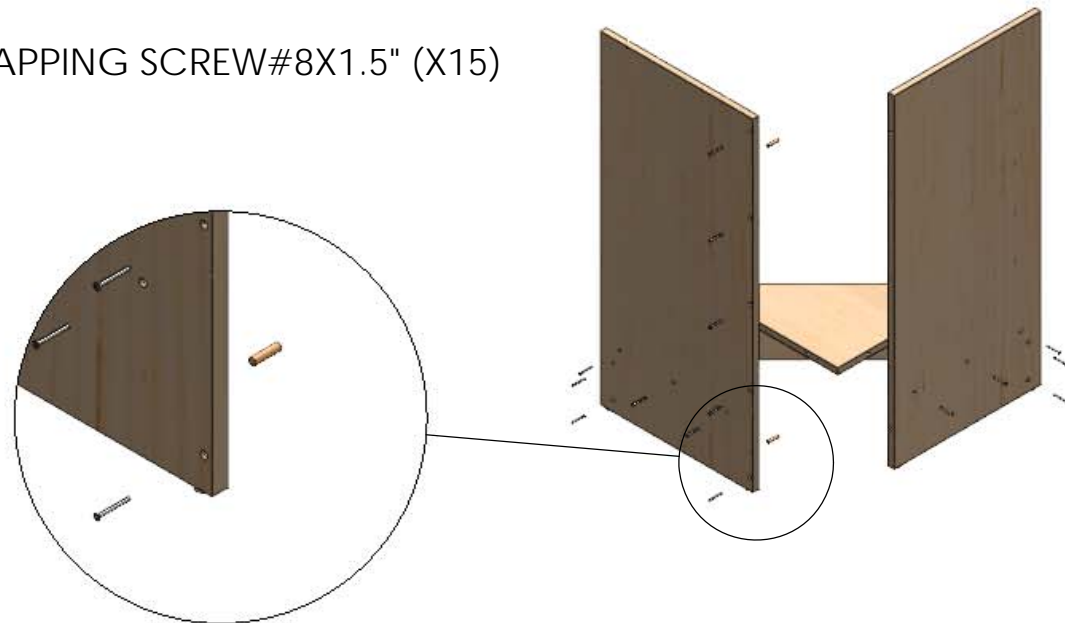
TOE KICK (X1)
BOTTOM PANEL (X1)
CAMLOCK (X3)
WOOD DOWEL (X2)



STEP 2:

1. INSERT WOOD DOWELS INTO BOTTOM PANEL & LEFT SIDE PANEL;
2. CONNECT LEFT & RIGHT SIDE PANEL & BASE BY WOOD SCREWS;

LEFT SIDE PANEL (X1)
RIGHT SIDE PANEL (X1)
PHILLIPS FLAT HEAD SELF-TAPPING SCREW#8X1.5" (X15)
WOOD DOWEL (X6)



STEP 3:

1. INSERT THE SHELF CLIPS INTO SIDE PANELS;
2. INSERT GLASS SHELVES INTO SHELF CLIPS;
3. TIGHTEN GLASS CLIPS;

GLASS SHELF (X2)
SHELF CLIP (X8)

