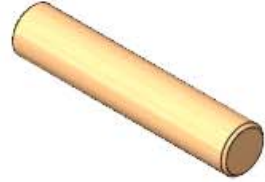


ASSEMBLY INSTRUCTIONS - 260 - EC - WC4 - (4' WRAP COUNTER)



CAMLOCK (X54)



WOOD DOWEL (X34)



SHELF PIN (X12)



PVC STICKER (X32)



A. BOTTOM PANEL (X1)



B. KICK PANEL (X2)



C. DIVIDER PANEL (X1)



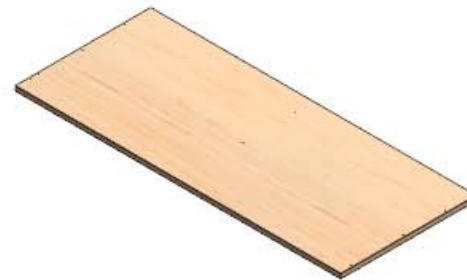
D. BACK PANEL (X1)



E. LEFT SIDE PANEL (X1)



F. RIGHT SIDE PANEL (X1)



G. TOP PANEL (X1)



H. SHELF (X3)

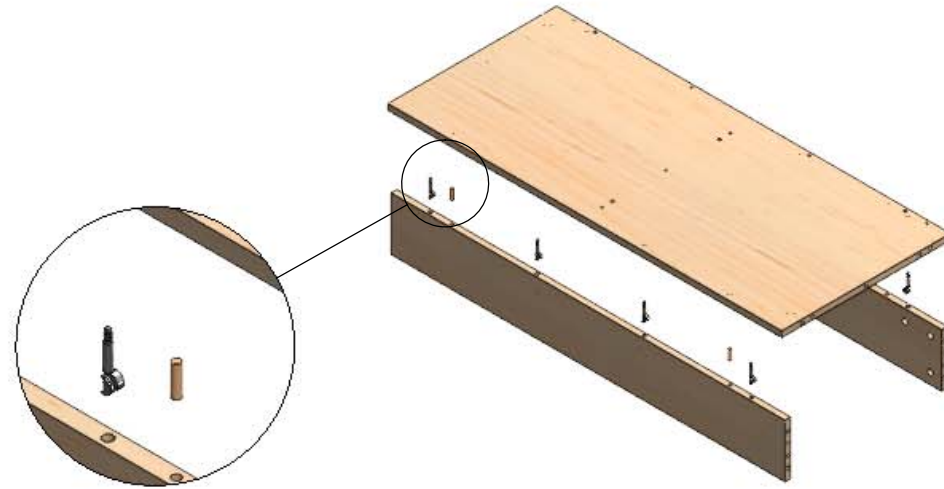


ASSEMBLY INSTRUCTIONS - 260 - EC - WC4 - (4' WRAP COUNTER)

STEP 1:

1. SCREW THE BOLTS OF CAMLOCK & INSERT WOOD DOWELS IN THE BOTTOM OF BOTTOM PANEL;
2. CONNECT KICK PANELS BY CAMLOCKS;

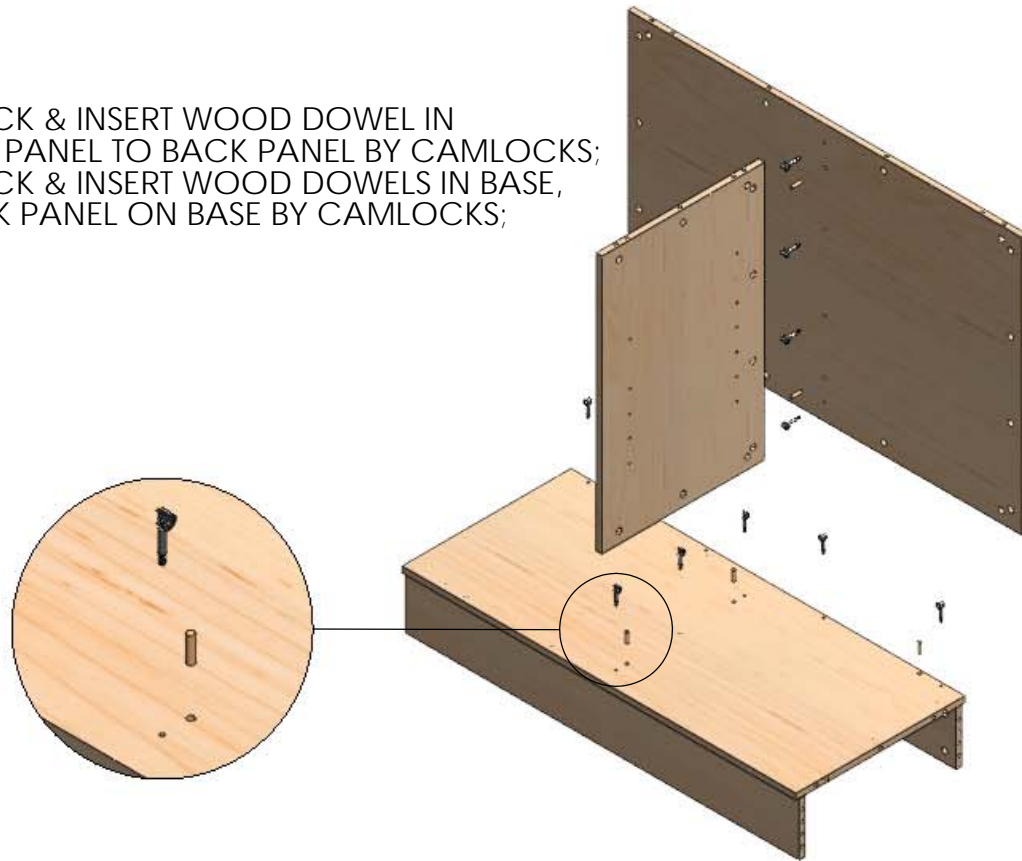
BOTTOM PANEL (X1)
KICK PANEL (X2)
WOOD DOWEL (X4)
CAMLOCK (X8)



STEP 2:

1. SCREW THE BOLTS OF CAMLOCK & INSERT WOOD DOWEL IN BACK PANEL, ATTACH DIVIDER PANEL TO BACK PANEL BY CAMLOCKS;
2. SCREW THE BOLTS OF CAMLOCK & INSERT WOOD DOWELS IN BASE, ATTACH DIVIDER PANEL & BACK PANEL ON BASE BY CAMLOCKS;

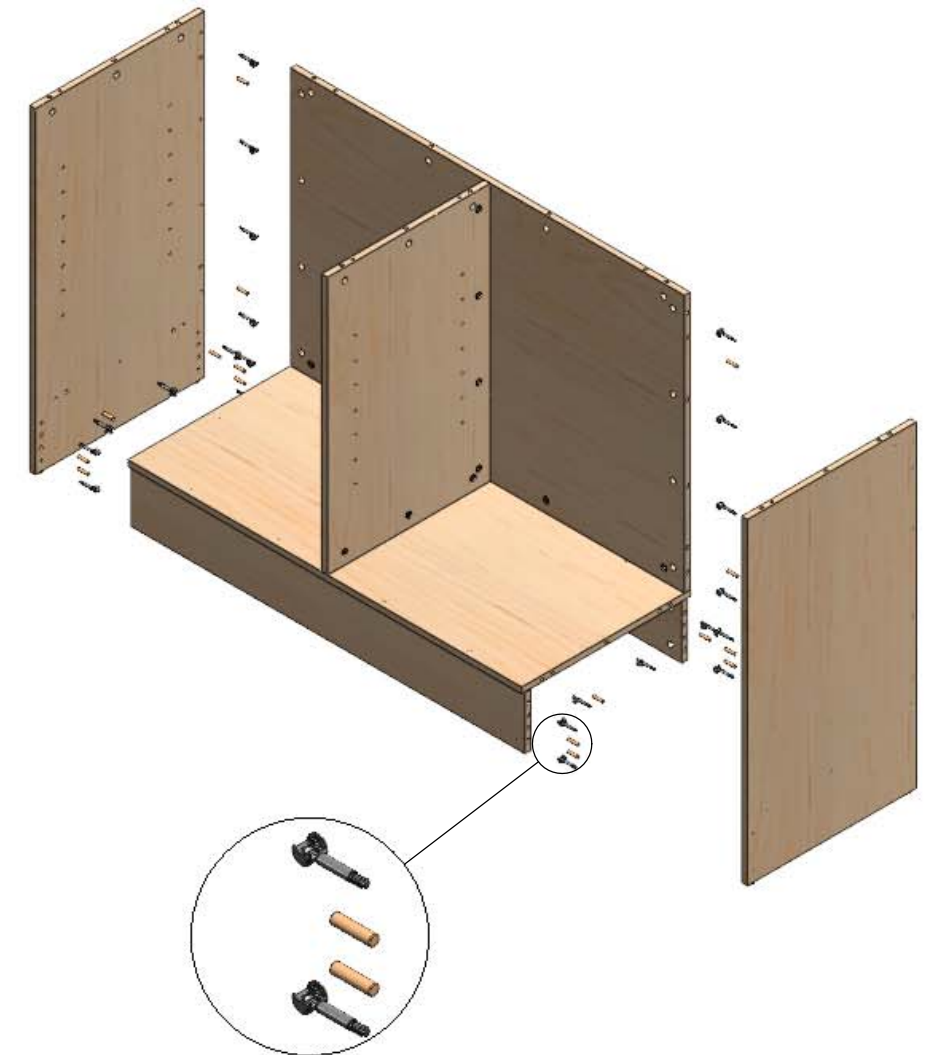
DIVIDER PANEL (X1)
BACK PANEL (X1)
WOOD DOWEL (X6)
CAMLOCK (X11)



STEP 3:

1. SCREW THE BOLTS OF CAMLOCK INTO LEFT & RIGHT SIDE PANEL; INSERT WOOD DOWELS INTO BASE & BACK PANEL;
2. CONNECT LEFT & RIGHT SIDE PANEL BY CAMLOCKS;

LEFT SIDE PANEL (X1)
RIGHT SIDE PANEL (X1)
WOOD DOWEL (X16)
CAMLOCK (X22)

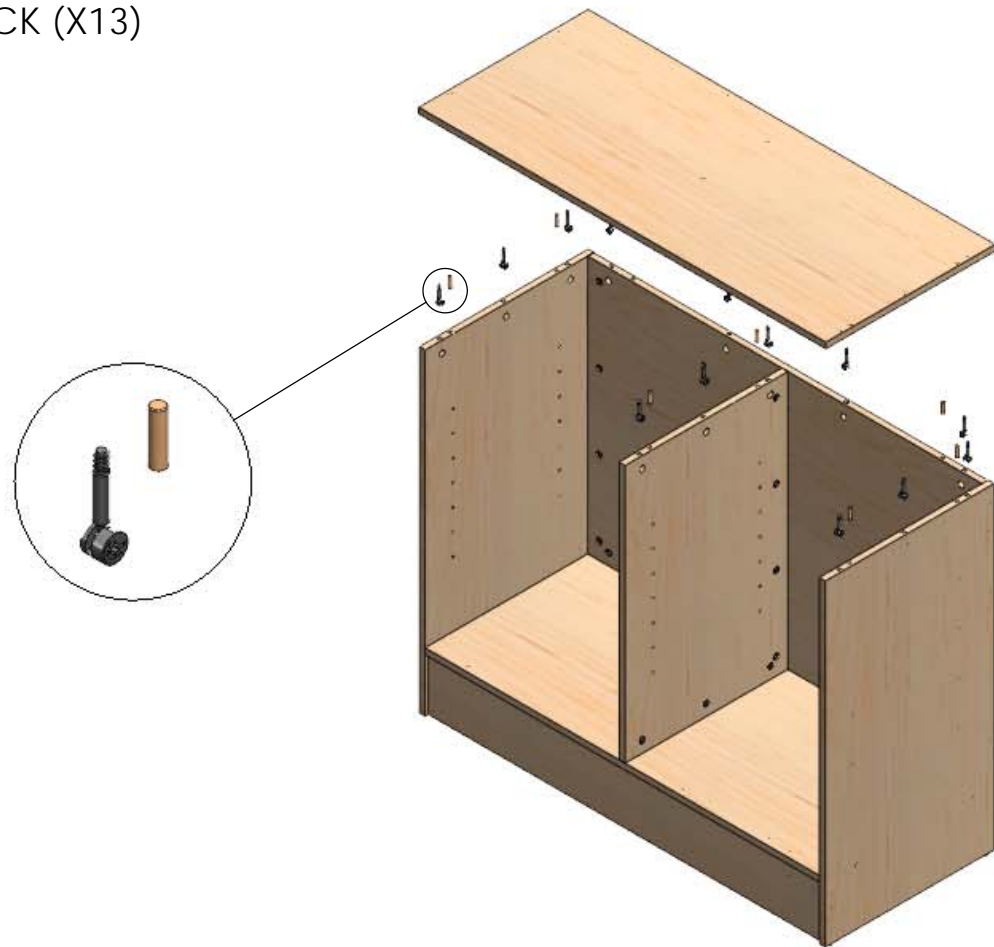


ASSEMBLY INSTRUCTIONS - 260 - EC - WC4 - (4' WRAP COUNTER)

STEP 4:

1. SCREW THE BOLTS OF CAMLOCK & INSERT WOOD DOWELS INTO TOP PANEL;
2. CONNECT TOP PANELS BY CAMLOCKS;

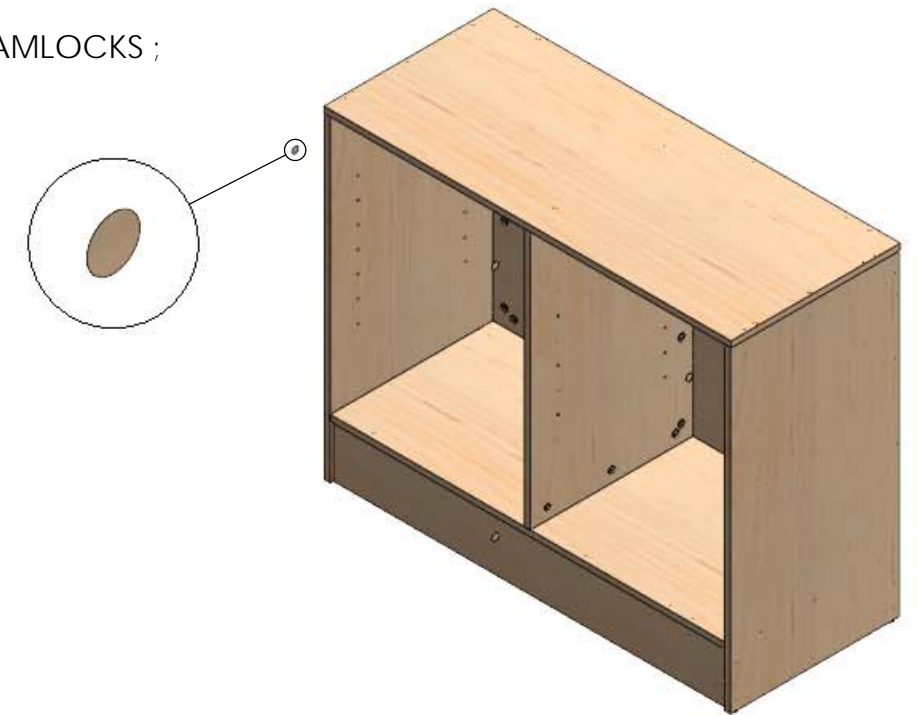
TOP PANEL (X1)
WOOD DOWEL (X8)
CAMLOCK (X13)



STEP 5:

1. STICK PVC STICKERS TO COVER THE CAMLOCKS ;

PVC STICKERS (X32)



STEP 6:

1. INSERT SHELF PINS IN POSITION;
2. SIT SHELVES ON SHELF PIN;

SHELF PIN (X12)
SHELF (X3)

