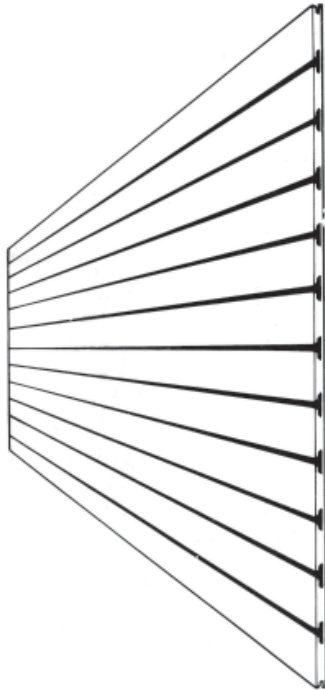


Installation Instructions for Slatwall



Introduction Statements expressed in this technical bulletin are the recommendations for the application of Marlite brand products as outlined and illustrated under normal conditions of installation. The recommendations provided in the bulletin represent our best judgment based on our experience with normal applications. Unless prior approval is obtained in writing from Marlite, any deviation from these recommended procedures shall be at the sole risk of the installers.

Important Read complete instructions carefully before you begin application.

Remember Displawall is a wood based product. It is susceptible to expansion and contraction when exposed to environmental extremes.

Tools Use ordinary carpenter tools, primarily power screwdriver or Phillips head screwdriver, level, chalk line, a fine tooth saw (a carbide tipped blade is required for mirror and metal surfaces), power drill, 5/32" twist drill bit, and #8 trusshead drywall screws.

Preliminary Steps

Store panels in a DRY environment.

Open carton(s) and inspect all panels carefully.

Carefully inspect all panels. Due to texture and manufacturing techniques, some panels may vary in color consistency and pattern.

Before installation, arrange the panels on each wall to achieve the best combination of color and pattern and make sure the end panels are of equal width for a balanced appearance.

Condition panels.

The panels should be allowed to equalize to the moisture in the room environment prior to installation. This is accomplished by standing Displawall separately around the room in which it will be installed for at least 48 hours before application.

Prepare walls.

Structural walls should be finished with building completely closed. All types of walls should be thoroughly dry before panels are applied. Be sure the walls to which Displawall is to be attached are solid and true. If necessary use vertical furring strips with shims to insure a straight and even wall.

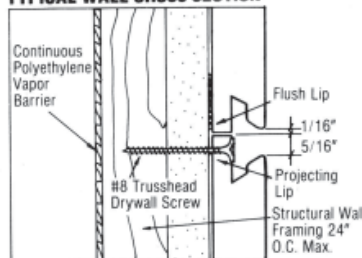
Important Supporting wall must be capable of supporting Displawall and subsequent Displawall hanging loads.

New Construction Masonry walls (Includes all exterior masonry, concrete block, cinder block, etc.) must be thoroughly dry and waterproofed inside and out before panel application. Never install panels directly to any masonry wall, exterior or otherwise. For masonry installations, install furring strips and a continuous vapor barrier prior to installing Displawall.

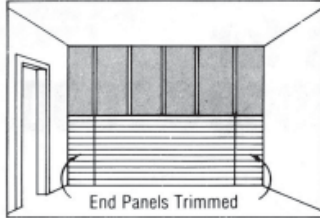
Remodeling Displawall may be applied to old walls which are solid and straight. Remove any high spots. Level low spots with patching plaster or scraps of wood. Backs of panels and wall must be free from dirt, dust, and grease before installation. Remove scaling paint and wallpaper. Wipe walls with a clean dry cloth to remove construction dust and any loose dirt. Protect existing surfaces with drop cloths and pads.

Important When installing Displawall in below grade applications or over new concrete block construction, it is recommended that a vapor barrier first be installed over walls to discourage warping due to humidity/temperature variation.

TYPICAL WALL CROSS SECTION



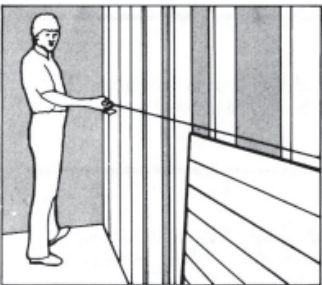
PROPER WALL LAYOUT



TRIMMING PANELS



STRIKE A LEVEL CHALK LINE



CHECK THAT PANELS ARE LEVEL



Plan a balanced layout

Measure wall(s) to be finished and locate the center of each. Pre-plan a balanced panel layout by laying panels out from the center of each wall to the corners.

Cut panels “face down” with a portable rotary powersaw to assure a clean cut edge.

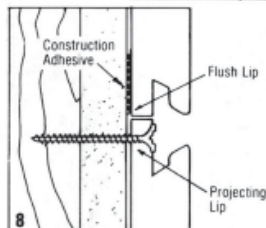
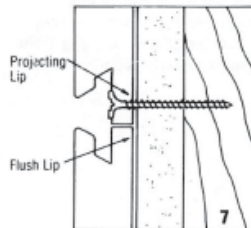
If a portable power saw is used, do all lay-out and cutting from the back of the panel to avoid chipping the surface. If a table saw is used, lay-out and cutting may be done on the front surface.

Remove all base molding if remodeling.

Installation Steps For Displawall

1. With a chalk line, strike a level line the height of a panel across the length of the installation. All panel edges must be aligned exactly with this line for the proper results.
2. If covering an entire wall, start the installation from one of the corners and work progressively from one wall to the other.
3. Establish a plumb line located at the first vertical joint the desired distance from the corner. If it is necessary to trim the end of a panel, trim the end that will be in the corner of the wall.
4. Carefully measure the location of cutouts, such as electrical outlets and windows. Make these cutouts prior to installing the panels.

Stacked Installations



■ When panels are stacked to a height greater than four feet, be sure to start by attaching the bottom panel first. Each panel has a projecting lip along the back edge to provide proper spacing of the slots when sheets are stacked edge to edge. Note the direction of this projecting lip and make sure all panels are installed in the same direction. (There is no “right” or “wrong” way, but you must be consistent).

■ In a stacked installation care must be taken to secure the horizontal joint. If the projecting lip is positioned downward (illustration 7), start the screw pattern with the projecting lip. Where the flush lip is positioned downward, Marlite brand panel adhesive must be applied to the horizontal joint before mounting Displawall. (See ill. 8).